

# Crisis



30th November 2017

# The Realities



Learning isolation

Literacy/illiteracy



Homelessness



Addiction & Mental  
Health

Socio-economic exclusion



Imposter syndrome

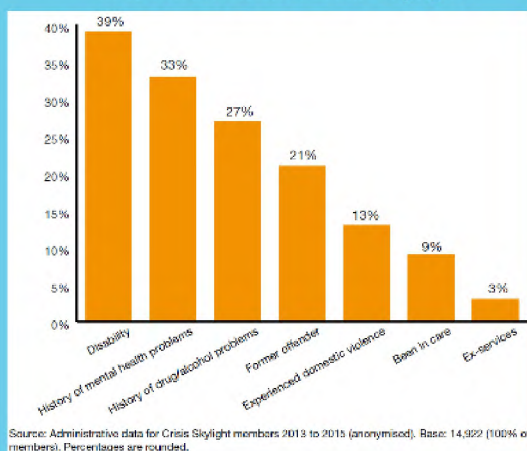


# Trends of Homelessness in the UK

Rough sleeping levels in England have increased by 132% since 2010 and by 16% since 2015.



Self-reported support needs at first contact with a Crisis Skylight



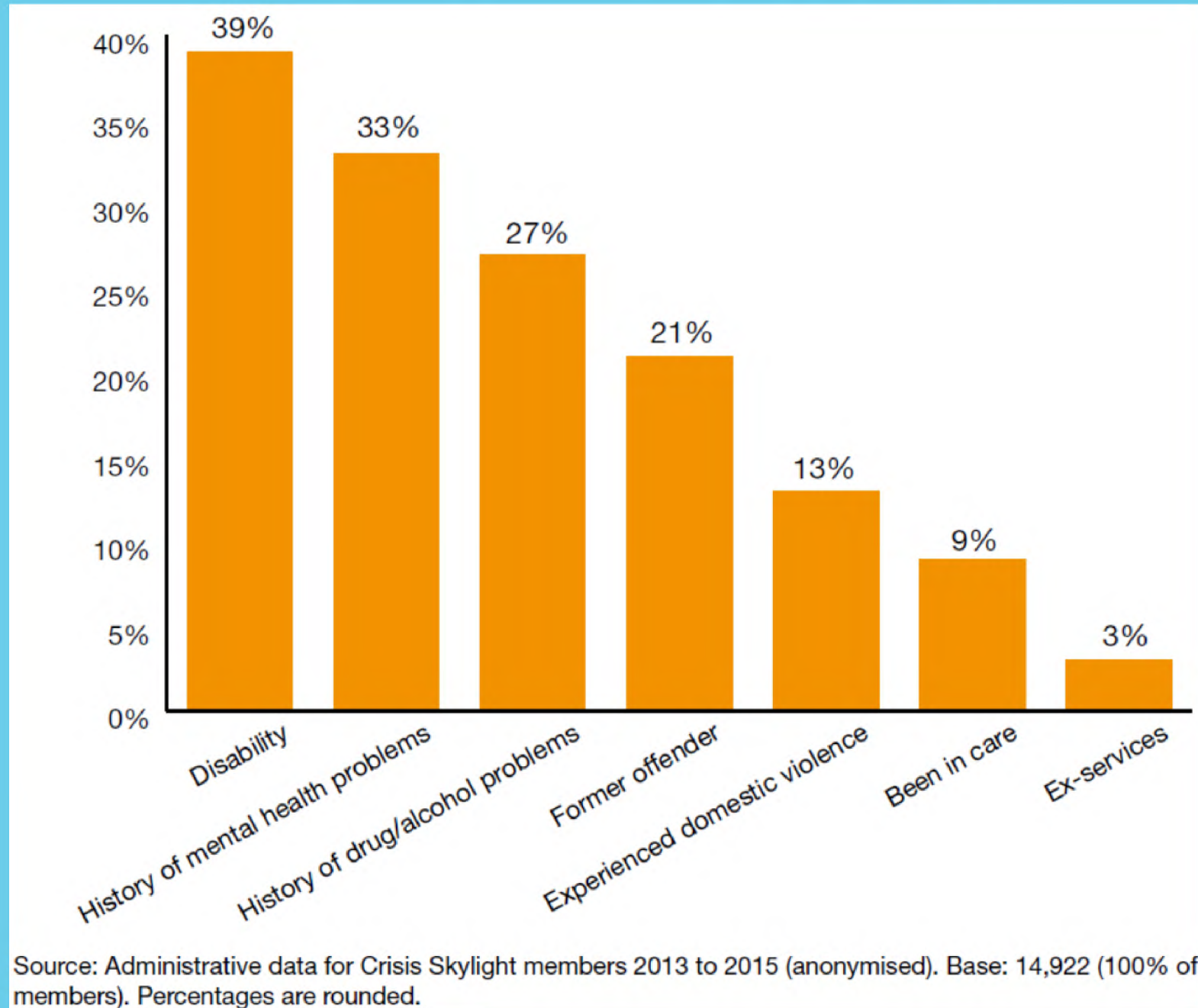
34%

58,000 households were accepted as homeless in 2015/16, a 34% increase since 2009/10.

In 2016 the number of adults in concealed household units was estimated at 3.34 million which have increased by one third since 2008.



# Self-reported support needs at first contact with a Crisis Skylight





# Cost of homelessness

People who experience homelessness for three months or longer cost on average:

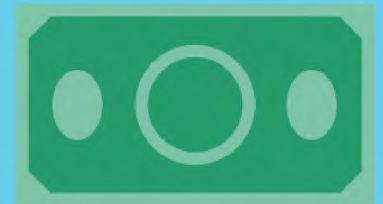
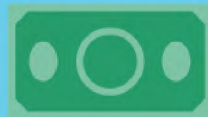
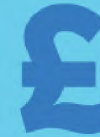
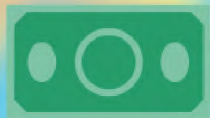
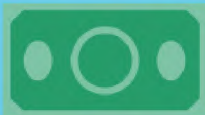
£4,298 per person to NHS services

£2,099 per person for mental health services

£11,991 per person in contact with the criminal justice system

Cost of rough sleeping for 12 months (£20,128) vs cost of successful intervention (£1,426).

Cost of temporary accommodation across London in 2014/15 was close to £663m



# Homelessness - The Human Cost

Intensifies social isolation



Creates barriers to education, training and paid work



Undermines mental and physical health

The Government's Digital  
Inclusion Strategy aims to get  
everyone online by 2020.  
(TSO 2014)

The Stationers Office



# Social impact

## Austerity and the Hardest Hit.

**33%**

of registered disabled  
people who've never  
used the internet

**343**

Libraries Closed  
between 2010-2016

**78**

Job Centres Closed

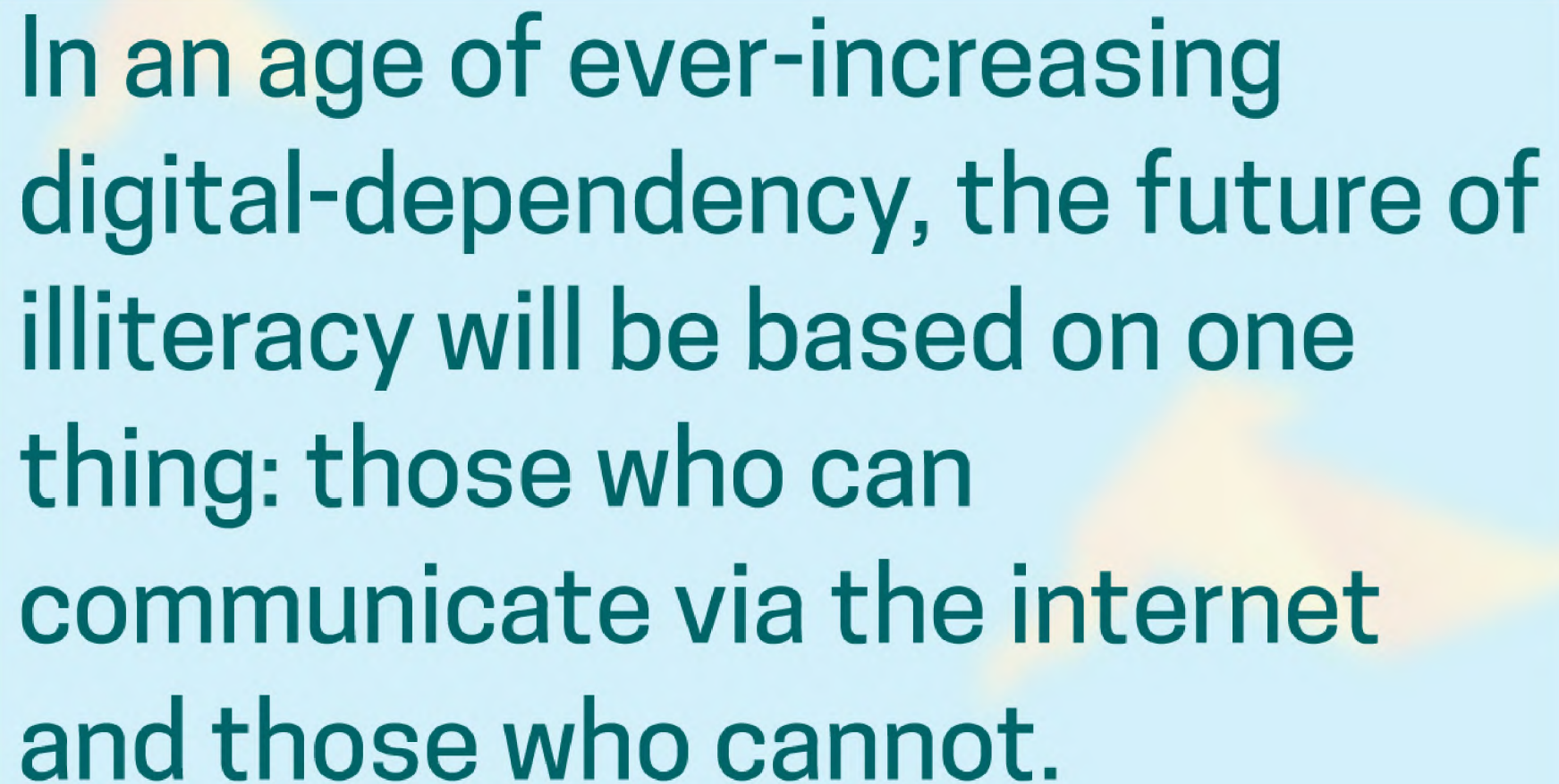
**48%**

of registered disabled  
individuals in work

**1 in 10**

Estimated further Job  
Centre branch closures





In an age of ever-increasing digital-dependency, the future of illiteracy will be based on one thing: those who can communicate via the internet and those who cannot.

# Our journey together



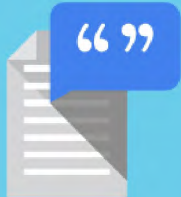
Microsoft tools



TalkType



USB Sticks



Oratio



XMind

for planning



Group sessions



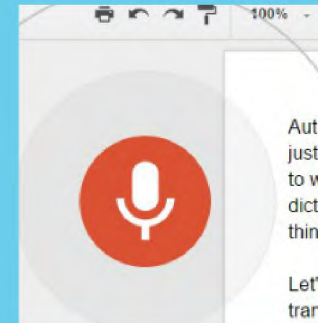


# Our journey together



Google Docs

Cloud Storage



Voice Typing



Xmind for anxiety management



One-to-one Sessions



"There is no such thing as a neutral education process. Education either functions as an instrument which is used to facilitate the integration of generations into the logic of the present system and bring about conformity to it, or it becomes the 'practice of freedom', the means by which men and women deal critically with reality and discover how to participate in the transformation of their world."

## **Pedagogy of the Oppressed**

# Peter's Journey



Google Keep



Take Photos



iPhone Text-to-  
Speech



# Questions



[crisis.org.uk](https://crisis.org.uk)

[dnamatters.co.uk](https://dnamatters.co.uk)

# Data sources

[http://webarchive.nationalarchives.gov.uk/20160110102434/http://www.ons.gov.uk/ons/dcp171778\\_323333.pdf](http://webarchive.nationalarchives.gov.uk/20160110102434/http://www.ons.gov.uk/ons/dcp171778_323333.pdf)

[https://github.com/BBC-Data-Unit/libraries/blob/master/library\\_closures\\_BBC.csv](https://github.com/BBC-Data-Unit/libraries/blob/master/library_closures_BBC.csv)

<https://www.gov.uk/government/consultations/work-health-and-disability-improving-lives/work-health-and-disability-green-paper-improving-lives>

<http://www.independent.co.uk/news/uk/politics/jobcentre-closing-dwp-impact-assessment-louise-haigh-a7575061.html>

<https://www.theguardian.com/business/2017/jan/26/jobcentres-to-close-government-benefits>

<https://www.gov.uk/government/news/new-streamlined-jobcentre-plus-network-with-more-support-for-jobseekers>

<http://www.cipfa.org/services/statistics/comparative-profiles/public-libraries>